



# APRIL

## ETA SIGMA NEWSLETTER

Vol. 006

PREPARED BY: Arly Hernandez

DATE: April 29th, 2021



From left to right: Caroline Etherton (camera-holder), Elaine Helm, Ally McDermott, Abbey Wist, Bradley Stansbury, Jacob Damrow, Victoria Dorzey, Abby Lemen, Stephanie Prem, Jacqui Kraus, and Michael Wadsworth

The past year in Eta Sigma has been one for the history books. Well, I suppose you could say that about the state of the world as well. However, here we are, the end of the line. Simply put, nothing this past year has been easy. It has been difficult to run and lead a chapter virtually, yet, I believe we have grown to become stronger individuals and Sisters because of it.

This past month, we have been able to slowly get the wheels turning again. As pictured above, we have been able to resume to our typical band service during Game Days. During the month of April, the Sisters assisted the TUMB during their performances at TU Lacrosse games. While it's certainly not the same as running to the box truck after a post-game performance, it's a start.

*It's a spring revival.*

As the world heals and falls back into tune, Eta Sigma will continue to find its way back into the swing of things. I like to look back at the past year and think about all the things that went *right*, even in spite of all the limitations a virtual environment caused us. While the chapter struggled to find its balance at times, our love for this organization and each other kept us together and gave us the strength to power through.

One of my favorite Broadway musicals is the Tony Award winning show *Hadestown*, which tells the Greek tale of Orpheus and Eurydice. Within the show, the ensemble sings about their hopes of *spring coming again* as they face the brutal wind of winter.

While it's still blooming, I think it is safe to say, **spring has come again**. And Eta Sigma is ready to move forward and tackle things head first, fearless.

## A SPRING REVIVAL

*A Reflection on the Past Year  
in Eta Sigma*

WRITTEN BY: ARLY HERNANDEZ, #148



### SAVE THE DATE



**Women in Music  
Speaker Series Event**  
Saturday, May 1st at  
3PM



**Ginos Fundraiser**  
Sunday, May 2nd



**Senior Ceremony**  
Saturday, May 8th  
at 12PM



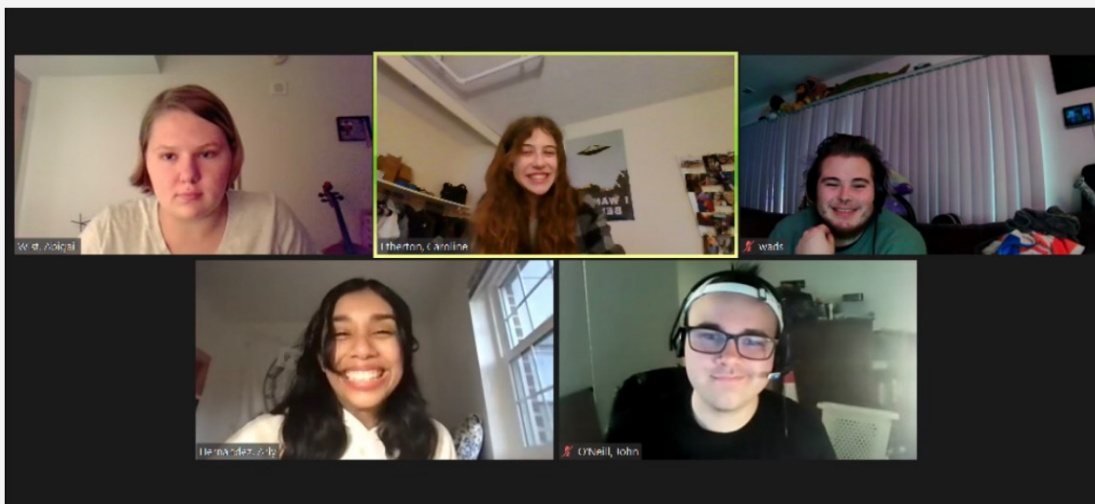
# *Keeping up With Eta Sigma*

## *A Month Full of Sisterhood and Service*

This past month has been a busy one for Eta Sigma! It has been filled with countless Sisterhood events, service, and philanthropy! We wanted to take the chance to show you the highlights of this past month!

### *Minecraft Night*

april 1st



Top Row: Abbey Wist, Caroline Etherton, Michael Wadsworth  
Bottom Row: Arly Hernandez and John O'Neill

On April 1st, our Sisterhood chair, Caroline Etherton hosted a Minecraft Night for Sisters to come on out and play together online! The night started with a special themed escape room and afterwards, Sisters stuck around to play with one another and enjoy the game together!

### *Service with a Smile*

april 10th and 24th

Did you hear the news? Game Day Crew is back! This past month, Sisters have been able to help out the TUMB during the lacrosse game performances! It's been lots of fun being able to get back into the swing of things and getting the chance to do in-person service (safely) again.



From left to right: Lynnett Hernandez, Jacob Damrow, Chris Rose, Michael Wadsworth, Stephanie Prem, Ally McDermott, Madison Hope, and Jacqui Kraus





From left to right: Abby Lemen, Michael Wadsworth, and Chris Rose



Sisters Jacqui Kraus and Stephanie Prem

## Paint Night april 3rd



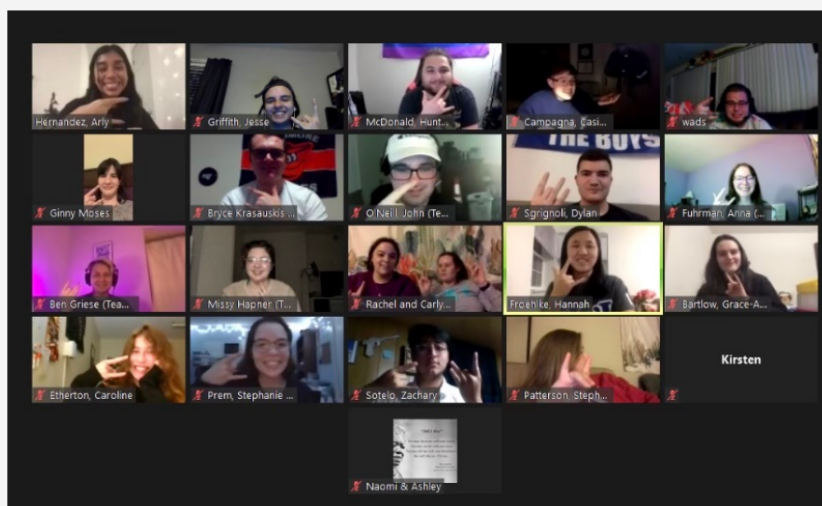
**Top Row:** Michael Wadsworth and Jesse Griffith  
**Middle Row:** Caroline Etherton and Kendall Appleby  
**Bottom Row:** Arly Hernandez

We're getting creative! On April 3rd, we had a Sisterhood Paint Night, but with a special twist! Sisters were encouraged to paint their own painting using only condiments/food items! It got a little messy and smelly but it ended up being lots of fun and alumnus Kendall Appleby was able to drop in on the fun!



## Joint History Night

april 10th



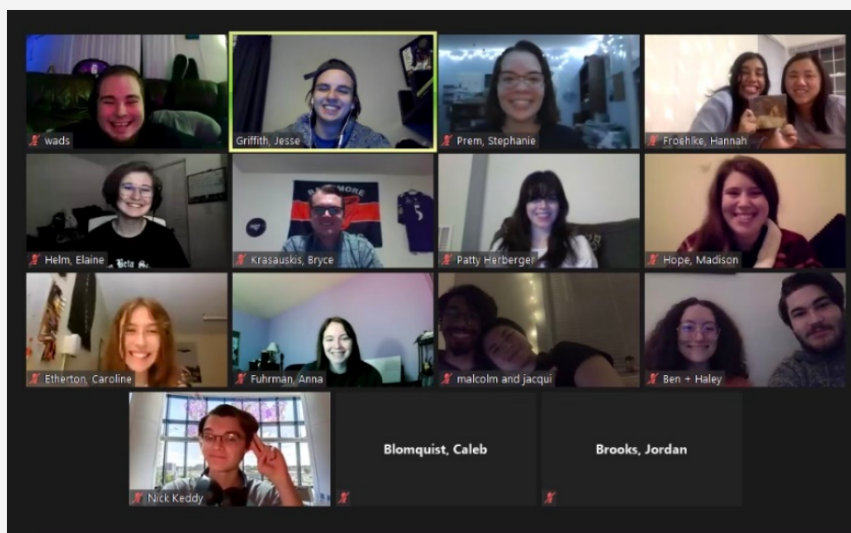
Members of Tau Beta Sigma, Sigma Alpha Iota, Phi Mu Alpha, and Kappa Kappa Psi!

"You and me, got a whole lot of history!"

This past month, TBS and KKPsi Historians, Arly Hernandez and Hannah Froehlike collaborated with SAI and PMA Historians, Jamie Atkins and Will Prichard in order to host a Joint History Night. The night focused on learning about each organization's national history while also learning about each individual chapter's founding history here at Towson. After a round of presentations given by each chapter's historian, Sisters and Brothers joined together to play a game of Jeopardy!

## Coffeehouse

april 17th



On April 17th, Sisters hosted our annual Coffeehouse! The Coffeehouse serves as a benefit showcase to help raise money for a philanthropic cause of our choice. This year we chose the Save the Music Foundation. This organization is dedicated to helping students, schools, and communities reach their full potential through the power of making music. Performances were given by many Sisters and fellow friends! It was an amazing event and we ended up raising over \$300 dollars for this wonderful cause.





## Vision Board Night

april 24th

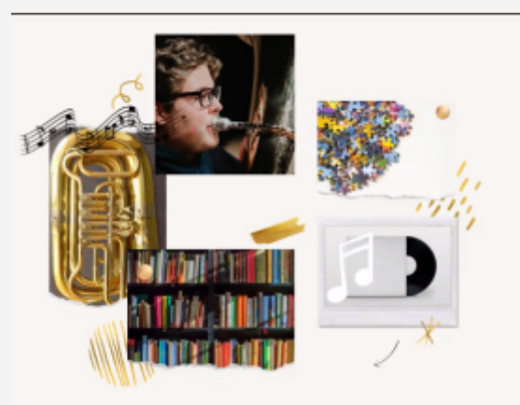


**Top Row:** Caroline Etherton and Jesse Griffith  
**Middle Row:** KKPsi Brother Nicci Bonner and Arly Hernandez  
**Bottom Row:** Michael Wadsworth

As a way to help us stay motivated towards the end of the semester, Sisterhood chair, Caroline Etherton, planned a Vision Board Night. Sisters and Brothers, spent the night talking about their own goals for the future and then we worked on our vision boards using the platform, Canva! Check out our finished products below!



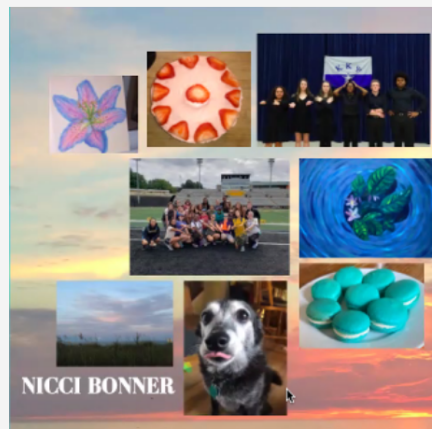
Made by Arly Hernandez



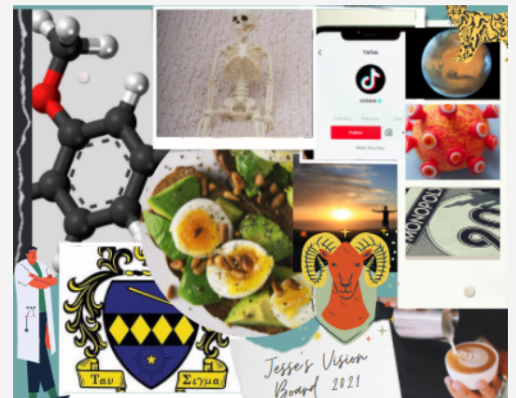
Made by Michael Wadsworth



Made by Caroline Etherton



Made by Nicci Bonner



Made by Jesse Griffith



# SPOTLIGHT

— SPRING 2021 —

## *Graduating Seniors*

This month we will be highlighting our graduating Seniors! We are incredibly proud of all their achievements and wish them nothing but luck in their future careers! We are grateful for everything they have contributed to the chapter and will miss them dearly.



## OLIVIA EVANS

**FAMILY AND BIG:** Purity (Trinity Line) and Matt Scott

**MEMBERSHIP CLASS:** Chi

**WHAT ARE YOUR PLANS AFTER GRADUATION:** I will be teaching elementary school in Baltimore City Public Schools!

**WHAT IMPACT HAS THE SISTERHOOD HAD ON YOU?** The sisterhood has had a huge impact on my college experience, from allowing me to challenge myself to step into new leadership roles, to meeting some of my best friends at Towson, to amazing service opportunities, the sisterhood has shaped me into a better person.

**ADVICE FOR FELLOW AND FUTURE SISTERS?** TBS allows you the opportunity to be a part of something that is bigger than all of us, never forget that when you wander far from home, you are not alone, sisters near and far are always there for you!

**WHAT WILL YOU MISS THE MOST ABOUT TOWSON?** I will miss the spontaneity of being a college student at Towson. From late nights at the library, to running into friends at the dining hall, to adventures off campus, and even those early band mornings, my best memories were made in the every day events of being on campus.

**A SONG THAT REMINDS YOU OF YOUR SISTERS?** International love, and all the times we would dance while doing service events!

## MADISON HOPE

**FAMILY AND BIG:** Shenanigans and Charlotte Maxwell

**MEMBERSHIP CLASS:** Psi

**WHAT ARE YOUR PLANS AFTER GRADUATION?** I'm going to find a financial firm that's right for me, and work towards helping out tons of people with their financial goals and situations

**WHAT IMPACT HAS THE SISTERHOOD HAD ON YOU?** The sisterhood showed me the true value of doing service for others, as well as how any task can be a good experience if done with the right people

**ADVICE FOR FELLOW AND FUTURE SISTERS?** Treasure the times you spend together. All the events we did together, pre pandemic, are some of my favorite memories. Take the time to go to these things and really appreciate being around one another.

**WHAT WILL YOU MISS THE MOST ABOUT TOWSON?** I'll miss being able to walk around campus and being steps away from some of my best friends

**A SONG THAT REMINDS YOU OF YOUR SISTERS?** Thanks fr the mnr's







## VICTORIA DORZEY

**FAMILY AND BIG:** Purity (Trinity Line) and Stephen Woodall  
**MEMBERSHIP CLASS:** Chi

**WHAT ARE YOUR PLANS AFTER GRADUATION?** Start as an Associate at RS&F and begin studying for the CPA Exam.

**WHAT IMPACT HAS THE SISTERHOOD HAD ON YOU?** The sisterhood has given me life long friends and I bond that I will cherish forever.

**ADVICE FOR FELLOW AND FUTURE SISTERS?** Put your heart into everything you do.

**WHAT WILL YOU MISS THE MOST ABOUT TOWSON?** I will miss all the events with the Marching Band, but mainly performing for high school competitions and exhibitions.

**A SONG THAT REMINDS YOU OF YOUR SISTERS?** Obviously "We are Family" by Sister Sledge.

## SONYA WILCOX

**FAMILY AND BIG:** Purity (Trinity Line) and Olivia Evans

**MAJOR:** Omega

**WHAT ARE YOUR PLANS AFTER GRADUATION?** My plans after graduating are to start teaching!

**WHAT IMPACT HAS THE SISTERHOOD HAD ON YOU?** The sisterhood has given me the best friends.

**ADVICE FOR FELLOW AND FUTURE SISTERS?** Make the best of it, you'll miss it when it's gone

**WHAT WILL YOU MISS THE MOST ABOUT TOWSON?** I'll miss TU home games the most.

**A SONG THAT REMINDS YOU OF YOUR SISTERS?** I can't think of a song 😊



## EMILY ENGLE

**FAMILY AND BIG:** Purity (Trinity Line) and Patty Herberger

**MAJOR:** Omega

**WHAT ARE YOUR PLANS AFTER GRADUATION?** Work a summer job while I hunt for a job related to my degree

**WHAT IMPACT HAS THE SISTERHOOD HAD ON YOU?** I've made a lot of great friends and learned that no matter what you'll have someone who can help you through whatever you're going through.

**ADVICE FOR FELLOW AND FUTURE SISTERS?** Don't be afraid to speak up. Your experience in the sisterhood is what you make of it.

**WHAT WILL YOU MISS THE MOST ABOUT TOWSON?** Living so close to all my friends. Marching band.

**A SONG THAT REMINDS YOU OF YOUR SISTERS?** Only Human by the Jonas Brothers. This song would play while we set up for post game during Driven. The brothers and sisters in the dancing pods would dance to this song and hype each other up before the show.



## GABBY JONES

**FAMILY AND BIG:** Water and Brennan Traube

**MEMBERSHIP CLASS:**

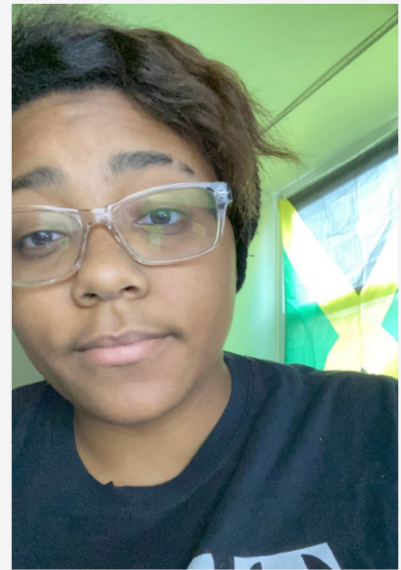
**WHAT ARE YOUR PLANS AFTER GRADUATION?** Either going to grad school in California or staying in Maryland and working on multiple productions

**WHAT IMPACT HAS THE SISTERHOOD HAD ON YOU?** I learned that multiple people have my back and support me

**ADVICE FOR FELLOW AND FUTURE SISTERS?** Advice I would give is to get to know your sisters more because they will always be there in a pinch

**WHAT WILL YOU MISS THE MOST ABOUT TOWSON?** I'll miss all the easy access to high end film equipment and marching band

**A SONG THAT REMINDS YOU OF YOUR SISTERS?** Cheetah Sisters by the Cheetah Girls



## JOHN O'NEILL

**FAMILY AND BIG:** Dragon and Ally McDermott

**MEMBERSHIP CLASS:** Alpha Gamma

**WHAT ARE YOUR PLANS AFTER GRADUATION?** I plan to go out on a road trip with some of my friends from high school for one last hurrah before we join the workforce

**WHAT IMPACT HAS THE SISTERHOOD HAD ON YOU?** Sisterhood has made me live in the moment more, before I joined TBS I was trying to plan my whole life but during the weekly meeting and other TBS events, I realized that it is okay to live a little and be myself.

**WHAT WILL YOU MISS THE MOST ABOUT TOWSON?** I am going to miss the daily interactions and shenanigans from everyone in Towson. Those days where I would be at the band table in Susquehanna hall for 3 hours just talking and laughing with everyone are some of my most cherished memories with Towson.

**A SONG THAT REMINDS YOU OF YOUR SISTERS?** "Watermelon Sugar" by Harry Styles because this was from one our playlists that we did in the fall and it was my first time hearing this song.

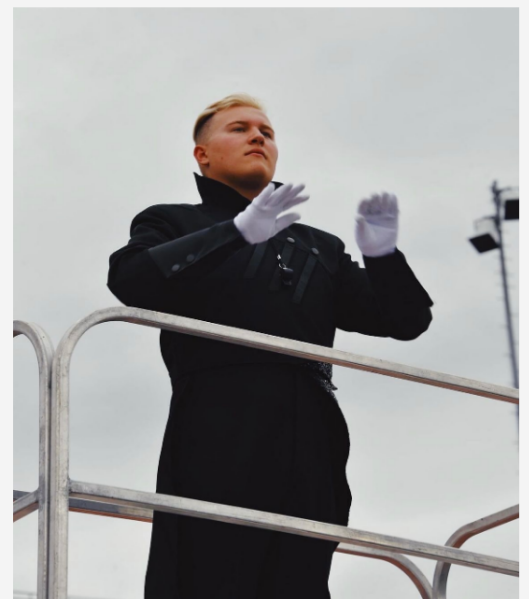


## BRADLEY STANSBURY

**FAMILY AND BIG:** Purity (Sky Line) and Kathleen Lucero

**MAJOR:** Chi

Bradley Stansbury joined the Eta Sigma chapter in Fall 2017 with his membership class, Chi. During his time at Towson, Bradley has been studying Cell and Molecular Biology and will be completing his degree this spring. In Fall 2018, Bradley became Drum Major for the Towson University Marching Band and has held the role ever since. While being an Active Sister, Bradley has held the position of chapter Secretary and has been a remarkable role model for many Sisters in the chapter. We will miss him dearly but wish him nothing but luck in his future endeavors!







# "The Weekly Minutes"

## The Archives Edition

Throughout the past year, our Secretary, Ally McDermott, has done a great job at recording the minutes for our weekly meetings! When Ally sends out the minutes, she tends to hide a question for us to find in order to encourage the Sisters to pass/fail the minutes promptly! During the last couple editions of the newsletter, we have shared a few of our responses to Ally's lovely questions. For this edition, we thought it would be interesting to dig back into the archives and find fun tidbits from past minutes from throughout the years. Can **YOU** figure out which year these excerpts are from?

### 1st excerpt

Found under New Business

*"Colleen got pegged with a lollipop at 6:09 pm EST"*

*Which year was this?*

A.) 2013

B.) 2017

C.) 2015

D.) 2018

### 2nd excerpt

Found under New Business

*"Theta, where's my money - Jello"*

*Which year was this?*

A.) 2009

B.) 2010

C.) 2008

D.) 2011

### 3rd excerpt

Found under New Business

*"Are we singing the loyalty song today?  
Can we practice it?  
Ya"*

*Which year was this?*

A.) 2014

B.) 2009

C.) 2015

D.) 2013

### 4th excerpt

Found under Old Business

*"Allison moves to open the floor in budget  
Alexis likes to amend for pee break"*

*Which year was this?*

A.) 2013

B.) 2010

C.) 2014

D.) 2011



# women in MUSIC

This upcoming Saturday, Eta Sigma will be hosting our second annual Women in Music Speaker Series! Here's a little bit about our speakers for the event!



*She-e Wu*

**SHE-E WU** has appeared as a soloist with Philadelphia Orchestra, Tampere Filharmonia (Finland), InterAmerican Festival Orchestra (Puerto Rico), Opole Philharmonic Orchestra (Poland), National Repertory Orchestra, Bethlehem Bach Festival Orchestra, Erie Philharmonic, West Point Concert Band, Moment Musical Orchestra, Taipei Chinese Orchestra and many others. Ms. Wu has also performed at the Bach Symposium/Variation Festival in Alice Tully Hall at Lincoln Center, the Philadelphia Orchestra Chamber Music Series, Chicago Chamber Musicians, Percussive Arts Society International Convention, and numerous festivals, universities and conservatories throughout the world. Ms. Wu has composed works for percussion, released solo and chamber recordings with American Brass Quintet, Gail Williams, Osuma Percussion Group, and concerto recording with Sejong Soloist, commissioned new works for percussion (Paul Lansky, Lee Hyla, Dafnis Prieto and etc), participated and hosted numerous symposiums, workshops and seminars. Ms. Wu designs instruments for Majestic/KHS company and mallets for Innovative Percussion, serves on the Board of Advisors for Percussive Arts Society and also as a frequent jury member for competitions worldwide. Ms. Wu is the director of percussion program at Northwestern University, frequent guest artist teacher at the Royal College of Music in London and consultant at Manhattan School of Music in NYC. Ms. Wu is an endorser of Majestic, Mapex, Zildjian and Innovative Percussion.

**ALEXIS C. LAMB** (b. 1993) is a composer, percussionist, and educator who is interested in fostering communities of mindful music-making, particularly through the medium of storytelling. Her recent musical endeavors incorporate her love of research and oral histories into sonic commentaries that often enable the performers to offer their own improvisations and responses. Lamb's music has been regarded as having "sparkling optimism throughout," and as "a pleasure in its own right" (I Care If You Listen).

As a composer, Lamb has collaborated with numerous individuals and ensembles, including the Albany (NY) Symphony's Dogs of Desire, Camilla Tassi, Contemporaneous, Emily Roller, the Yale Philharmonia, Evan Chapman, the University of Nebraska Percussion Ensemble, the Arizona State University Symphony Orchestra, and the Northern Illinois University World Steelband. Her music has been performed in North America, South America, Europe, and Africa.

As a percussionist, Lamb is working on a solo project called The Concord of Discord, which combines spoken word with percussion and electronics. This project seeks to explore how everyday objects, ideas, and activities can lead us into considering "the bigger pictures" of our lives -- our families, identities, relationships, priorities, values, and philosophies.

As an educator, Lamb's work runs the gamut from private lessons to clinics and large classes. She is a passionate advocate for students with disabilities and encourages creativity at every age and ability level. Prior to returning to graduate school, Lamb was the 6-12th grade band director for Meridian CUSD 223 in Stillman Valley, Illinois.

She will be starting her Doctorate of Musical Arts at the University of Michigan in fall 2021. Lamb earned a Master of Music in Composition at the Yale School of Music and two Bachelor of Music degrees in Music Education and Percussion Performance from Northern Illinois University. Her compositions can be found on Innova Recordings, National Sawdust Tracks, and Evan Chapman's self-published record, Caustics. When not working on music, she can be found playing board games at an overly competitive level, teaching her two cats new tricks, and fishing in every possible body of water.



*Alexis Lamb*



*Ashleigh Cicconi*

**ASHLEIGH CICCONI**, M.Ed., MT-BC, holds a Bachelor's of Music degree in music therapy from the University of Miami and Master's of Education degree in instruction and curriculum from Concordia University, with minors in psychology and early childhood education. After graduating in 2011 with her Bachelor's degree, Ashleigh worked as a board-certified music therapist and internship supervisor for United Cerebral Palsy, as well as maintained a private clinic, before moving into the music education field at Pine Crest School in Fort Lauderdale, Florida. At Pine Crest School, Ashleigh developed and implemented an original educational music program that combined music therapy and music education techniques to support academic and social development. After obtaining her Master's degree in 2015, she relocated to Baltimore, Maryland and worked for 3 years at Garrison Forest School as the Lower Division music teacher and Daycare Administrative Assistant. In 2018, Ashleigh also worked as a music therapy contractor for Augmenting Abilities, LLC. Currently, she is a Lower School Performing Arts teacher and Lower School Instrumental Director at McDonogh School (begun in 2018). Additionally, Ashleigh remains as an adjunct faculty member at Towson University, teaching courses in woodwind methods and special topics courses in music therapy, and previously was an adjunct instructor at the Hussman Center for Autism. As the current Maryland Music Education Association President-Elect of the General Music Teachers Association and past MMEA presenter, Ashleigh has myriad experiences in combining music education and music therapy techniques into the classroom to enhance social/emotional and academic learning. Finally, Mrs. Cicconi is a Doctor of Education candidate in educational leadership from Northcentral University.



## what is eta sigma listening to?

The past year, we've been making playlists as a way of showcasing our music appreciation! Here's our playlists from the last year, feel free to check them out on Spotify!



### **Our Dream Halftime Shows**

*A collection of songs that we wish we could incorporate in a future halftime show*



### **Vibes Playlist**

*A collection of songs that we love and wanted to share with one another*



### **A Celebration of Black Artists**

*This playlist is a celebration of the monumental contribution that Black artists have made to music*



### **Childhood Songs**

*A playlist of songs that remind us of our childhoods*



# A MESSAGE FROM THE EDITOR

Thank you to everyone who has reached out and shared how much they have enjoyed the newsletter this past year! It has truly been an honor to be the Chapter's Historian and to be able to work with many of you. I personally loved learning about the history of Eta Sigma through your fond memories and funny stories. They have all helped me feel more connected to the chapter and it makes me happy to hear that Eta Sigma was able to be such a positive experience for many of you during your time at Towson.

I remember when I was younger I used to dream of running my own newspaper. In a way, this newsletter has been my way of revisiting that dream and I hope every edition has been fun to read. My main goal with every edition was to make it better than the last. I hope I have succeeded. Last one, best one, right?

Overall, on behalf of the chapter, I thank you all for being our greatest cheerleaders and continuing to support our efforts this past year. As expected, this past year was difficult for Eta Sigma. We have had our highs and lows but we have risen above it all. We continue to look towards the future and we are excited to see what it brings.

For the final time, thank you to everyone who took the time to read this edition of the newsletter! **I would like to dedicate this edition of the newsletter to the family and friends of Brother Sarah Fitzgerald, who passed earlier this month. The Eta Sigma chapter sends you all love and light during this time.**

Always remember, through thick and thin, MLITB.

Signing off,  
Arly Hernandez, #148  
Chapter Historian 2020-21



## In loving memory of Sarah Lambert Fitzgerald

Sarah Lambert Fitzgerald was an influential member of the Iota Delta Chapter of Kappa Kappa Psi. Sarah went through her process with the Chi class in Spring of 2002. During her time in the fraternity, she was active in running game day crew in its earliest years, building it into the form that the Towson University Marching Band knows today. She was also there when the chapter won "Top Chapter" in 2003. Sarah served as Secretary, Alumni Liaison, Anniversary Chair, and Scholarship Chair for Iota Delta. After graduation, she was NEDAA Secretary for four years and President for four years. In 2014, she was made an honorary of the TBS Northeast District at the UConn convention. Sarah fulfilled her biggest dream when she became District Governor of the Northeast District of Kappa Kappa Psi. Through everything, Sarah Lambert Fitzgerald was a model brother. She never failed to lend a helping hand. We thank her for all that she did, and we will never forget her contributions.

- The Brothers of Iota Delta

